

Consulting Structural Engineering Services  
 6311 17th Ave NE, Seattle, WA 98115  
 Phone: 206-527-1288  
 Email: john@cse-engineering.com

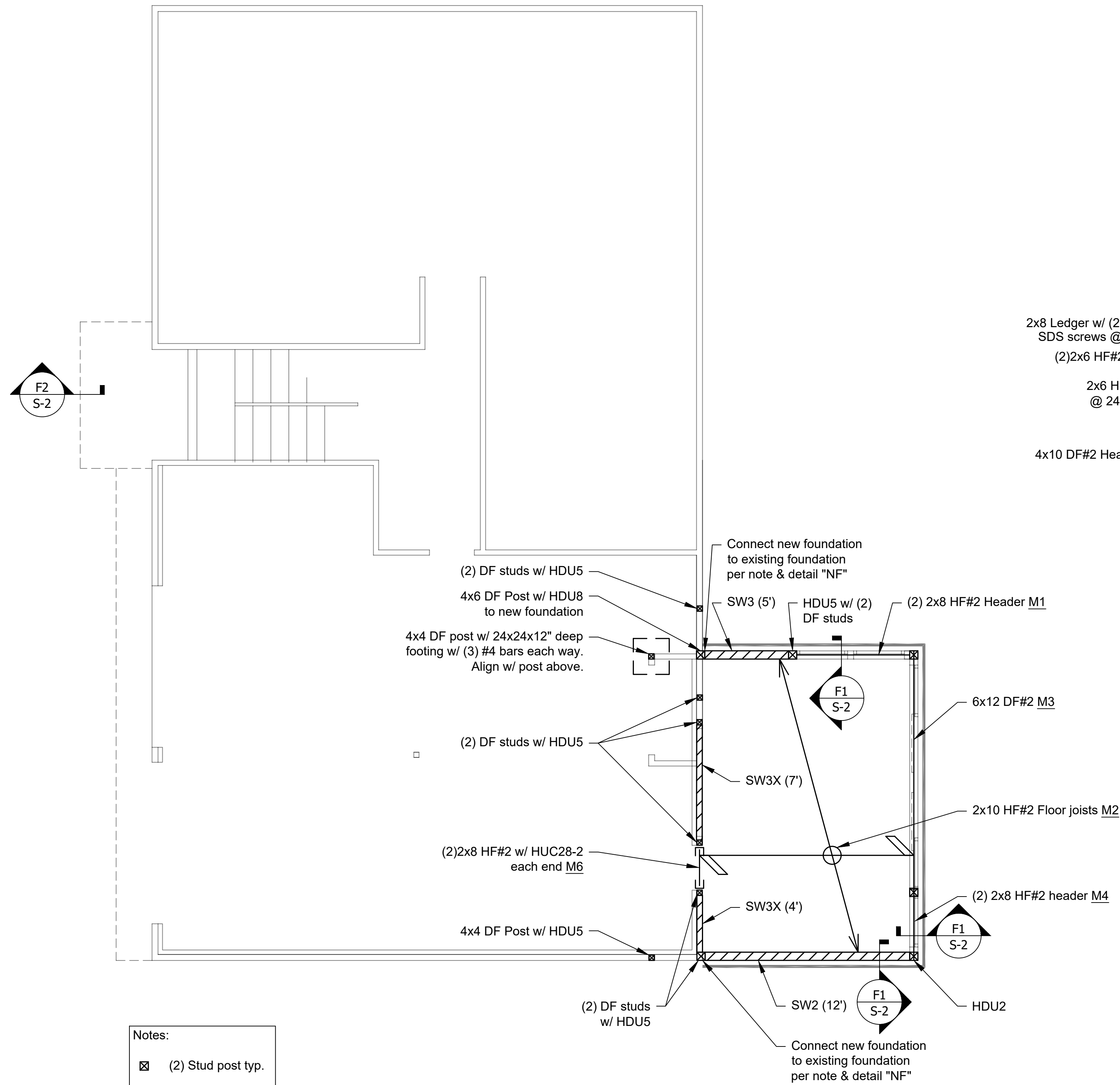
**Graham Addition**  
 4220 91st Ave SE  
 Mercer Island, WA 98040

Revisions:

Date:  
 9/17/21

Sheet:

**S-1**

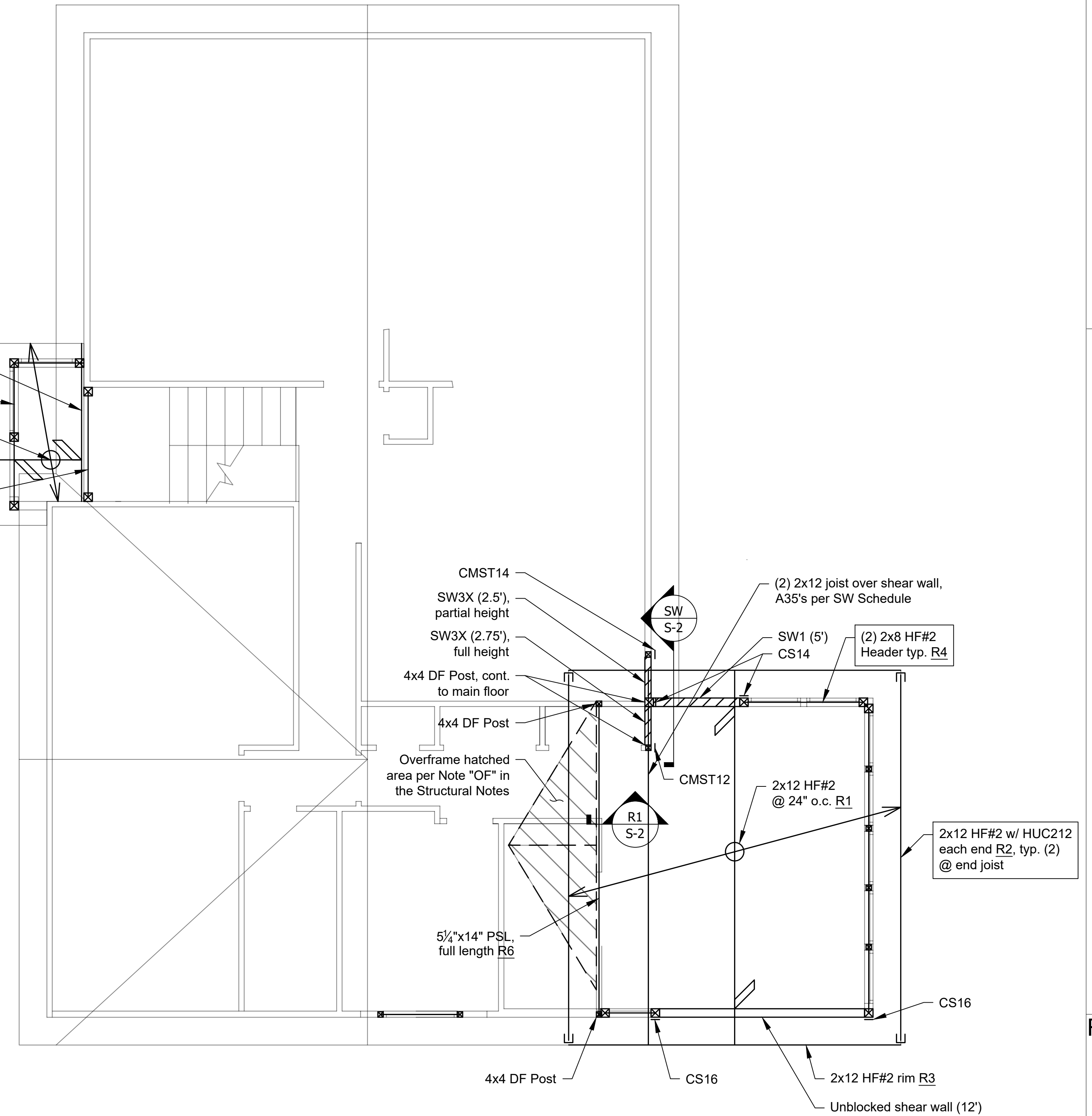


2x8 Ledger w/ (2) 1/4"x3 1/2" SDS screws @ 24" o.c.

(2)x6 HF#2 header

2x6 HF#2 min. @ 24" o.c. R8

4x10 DF#2 Header R10

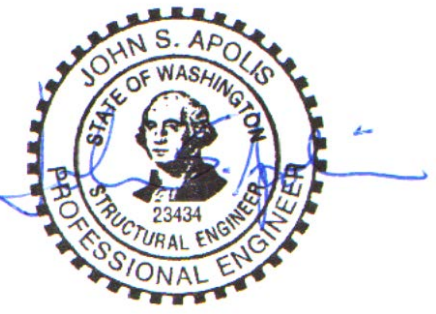


1 Main Floor Framing, Ground Floor Wall & Foundation Plan

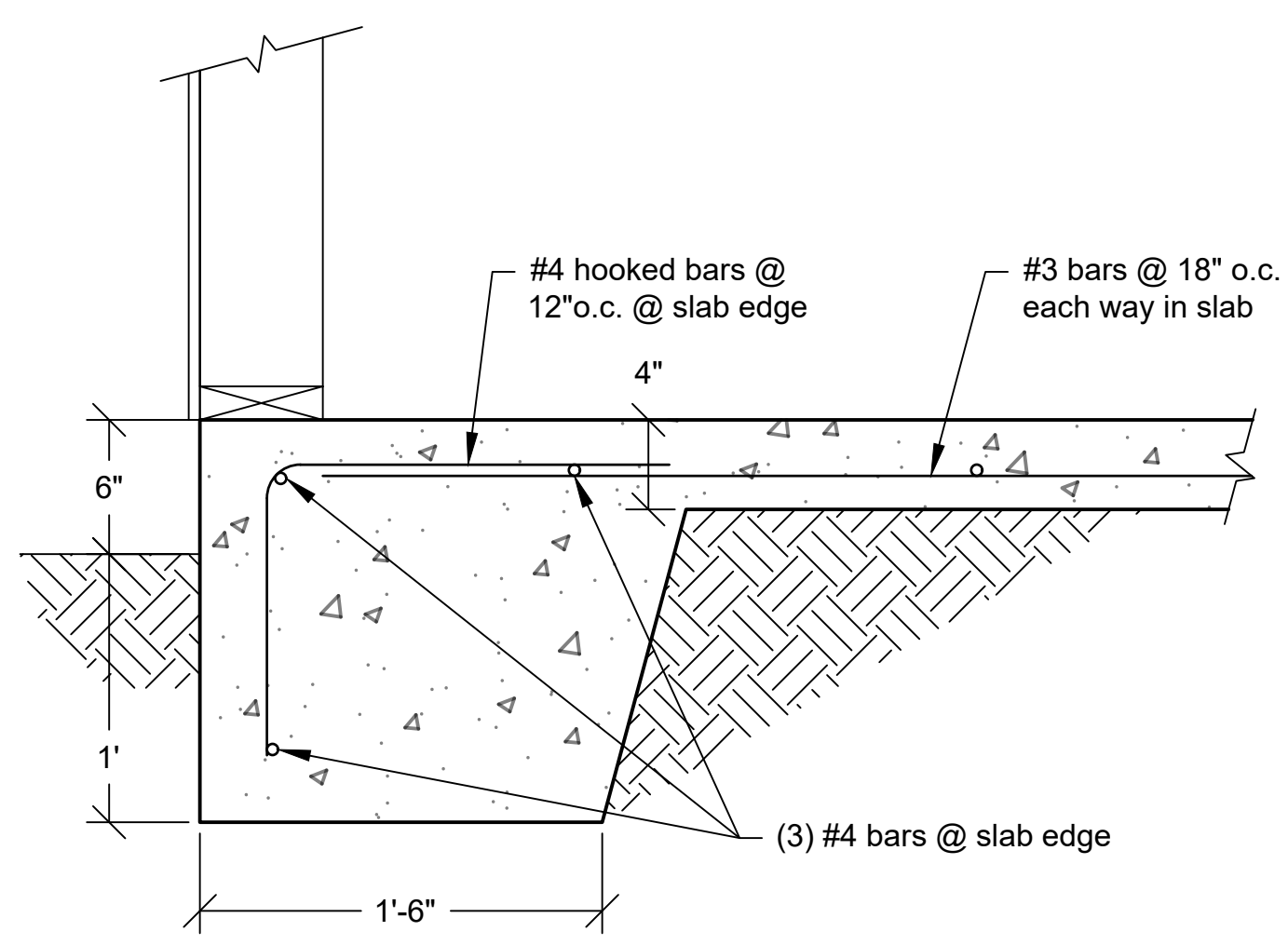
Scale: 1/4"=1'-0"

2 Roof Framing & Main Floor Wall Plan

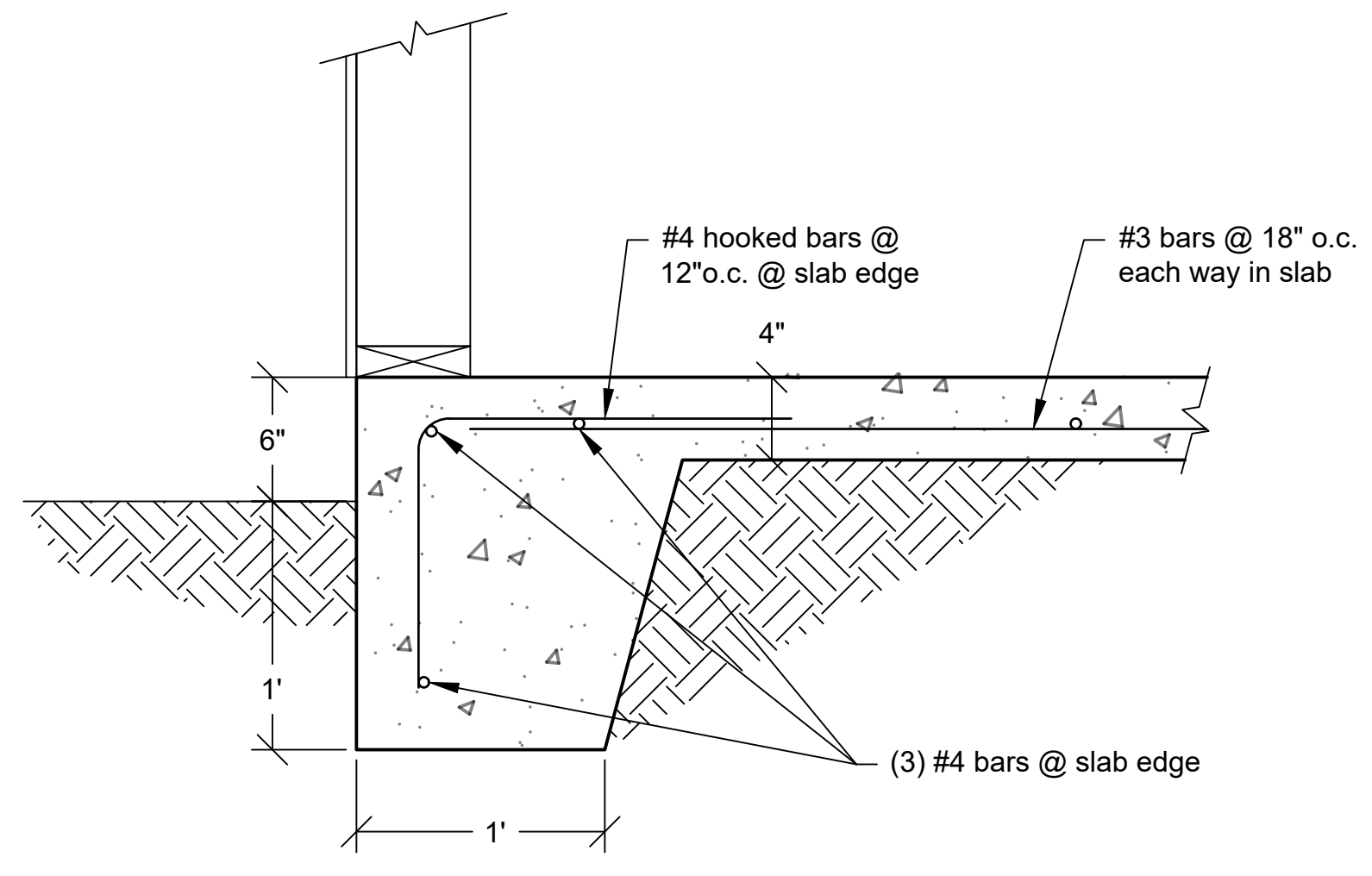
Scale: 1/4"=1'-0"



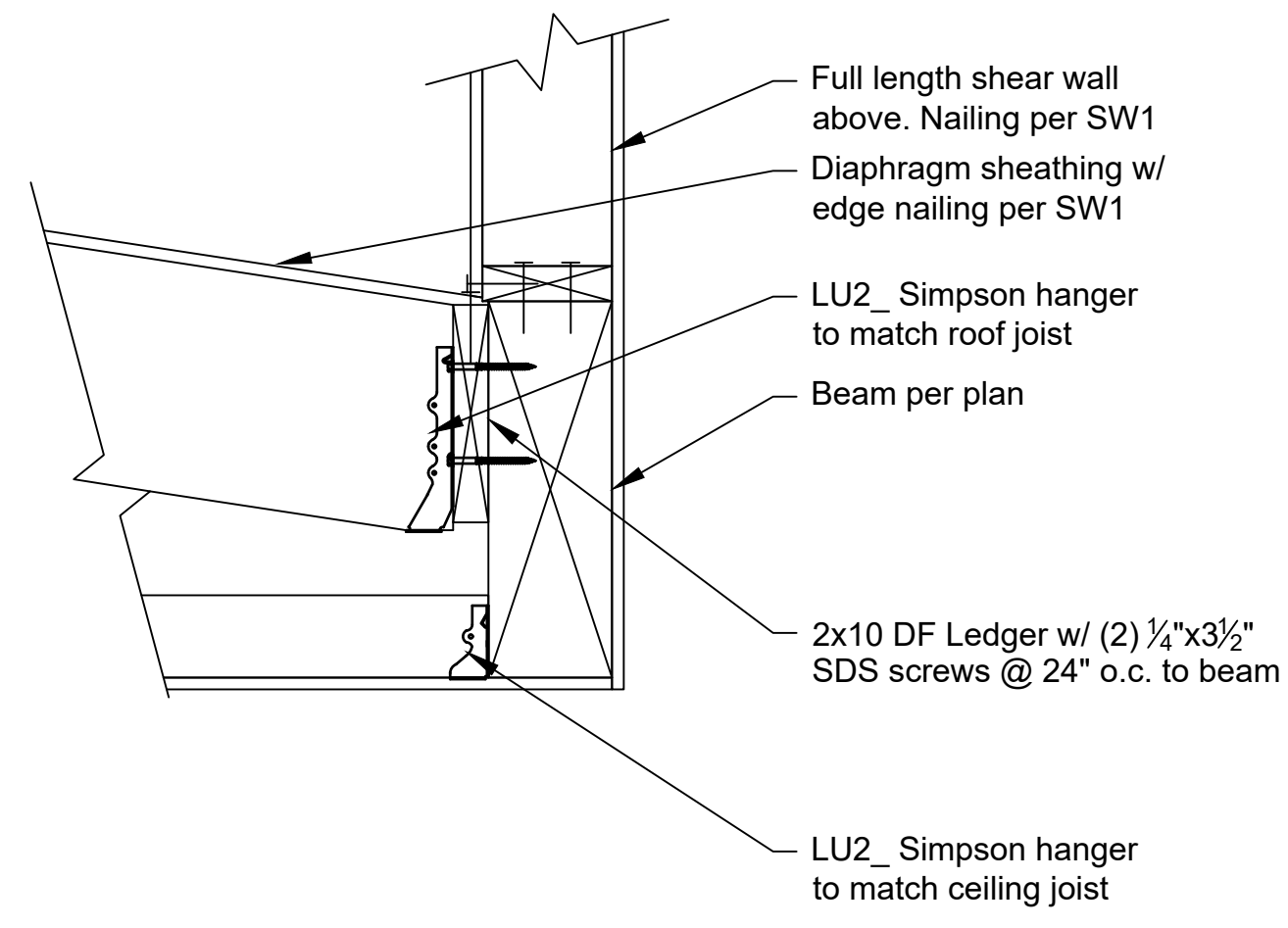
Consulting Structural Engineering Services  
 6311 17th Ave NE, Seattle, WA 98115  
 Phone: 206-527-1288  
 Email: john@cses-engineering.com



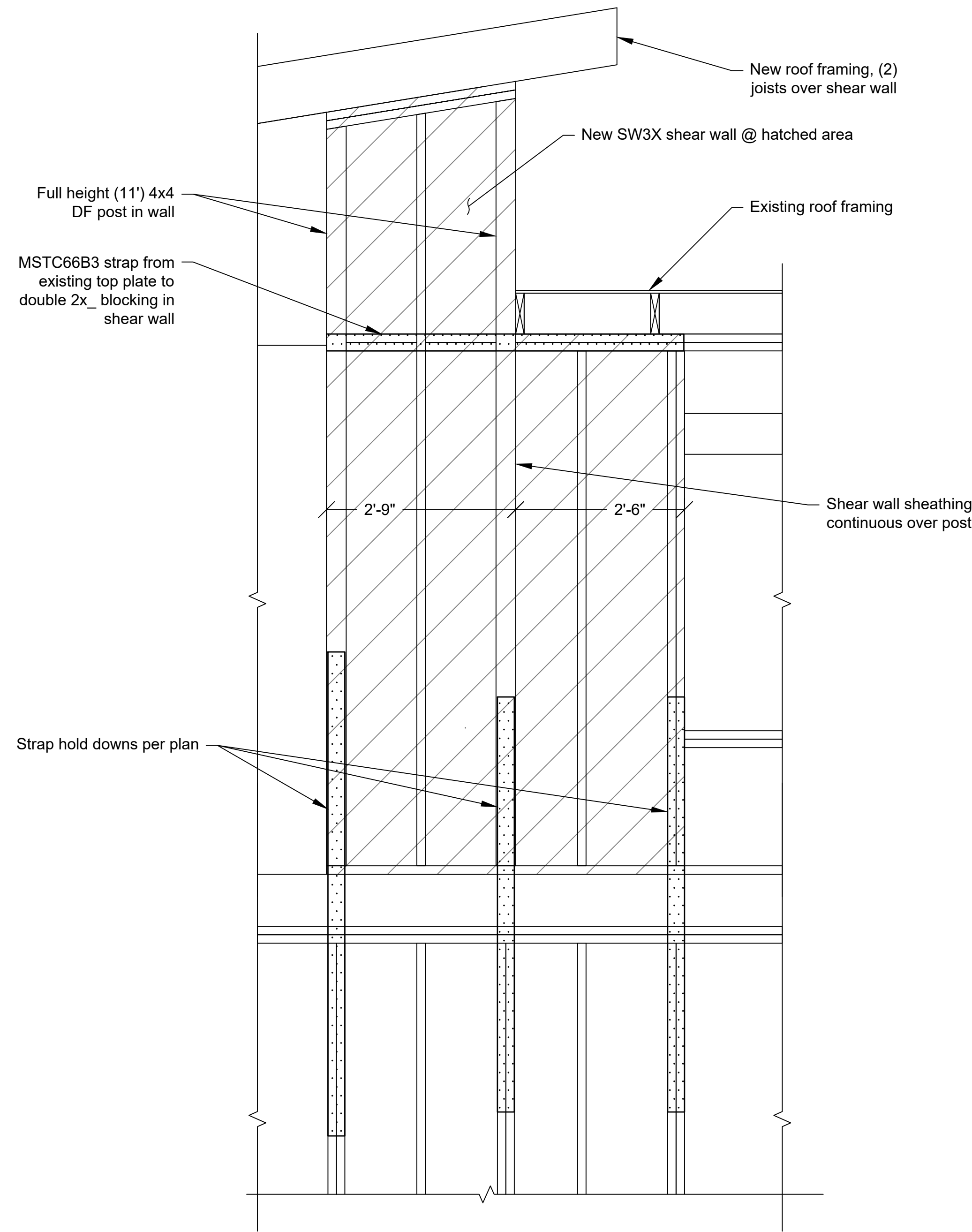
F1 Typical Foundation Detail  
 Scale: 1-1/2"=1'-0"



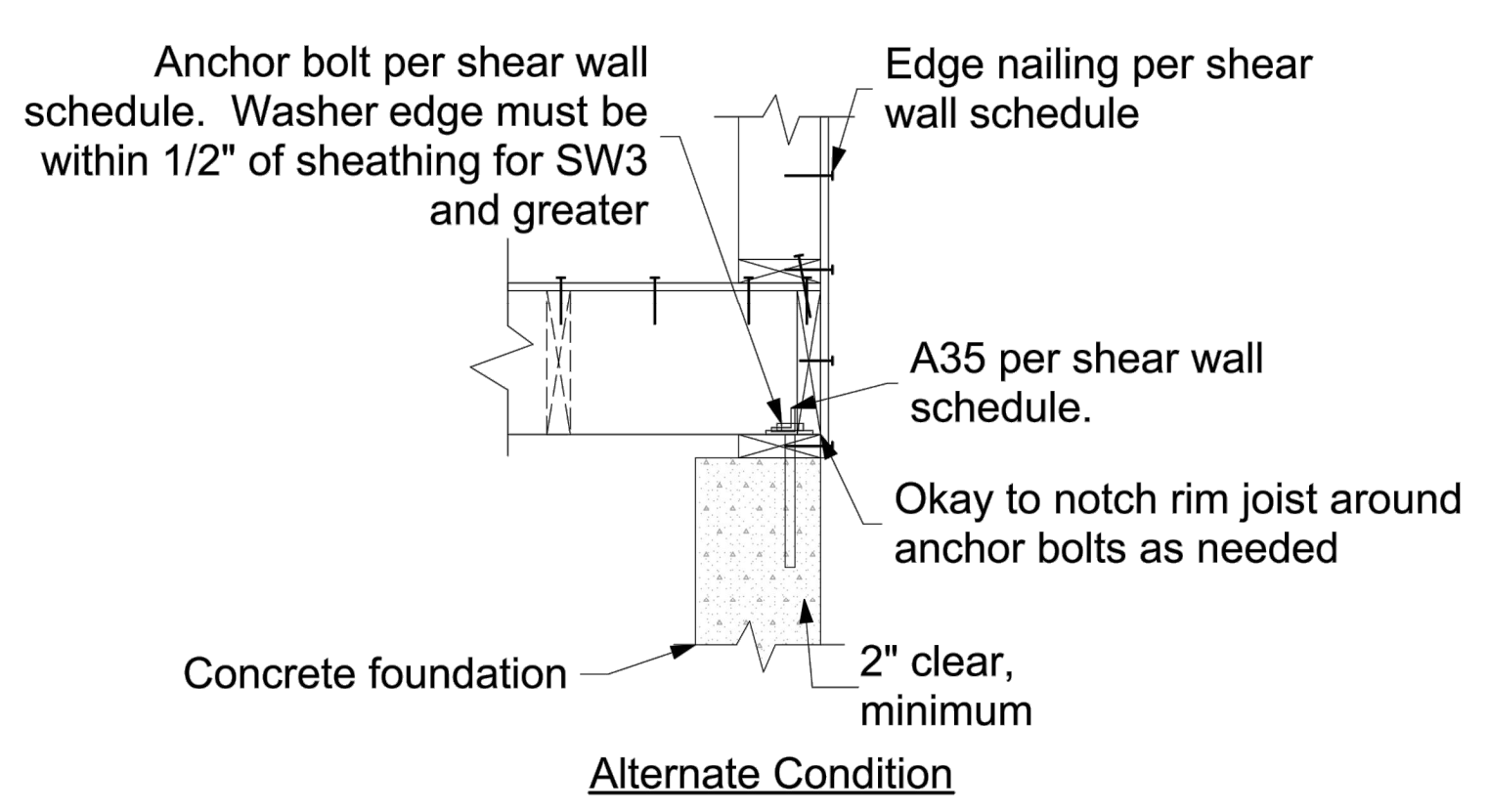
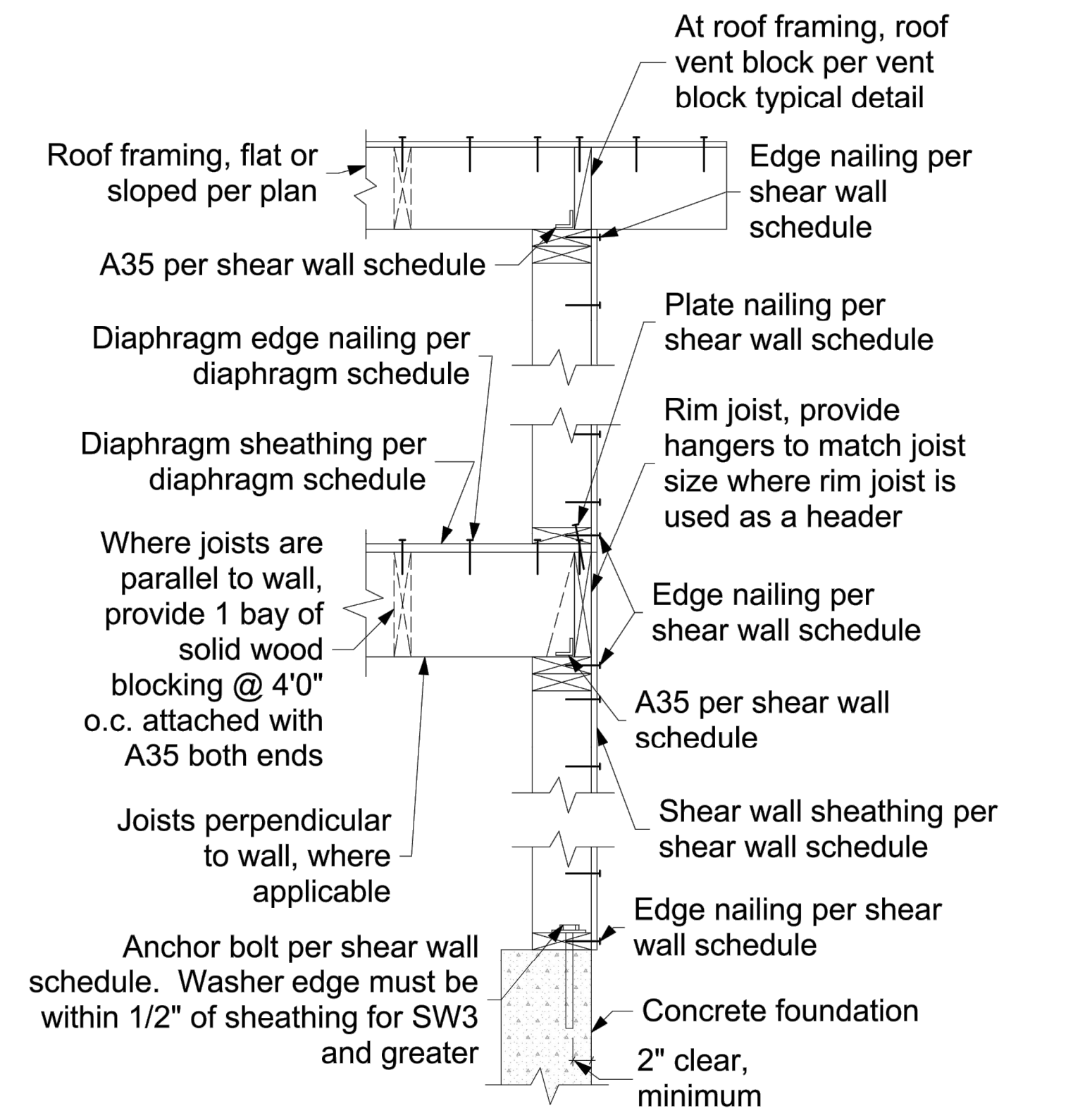
F2 Entry Foundation Detail  
 Scale: 1-1/2"=1'-0"



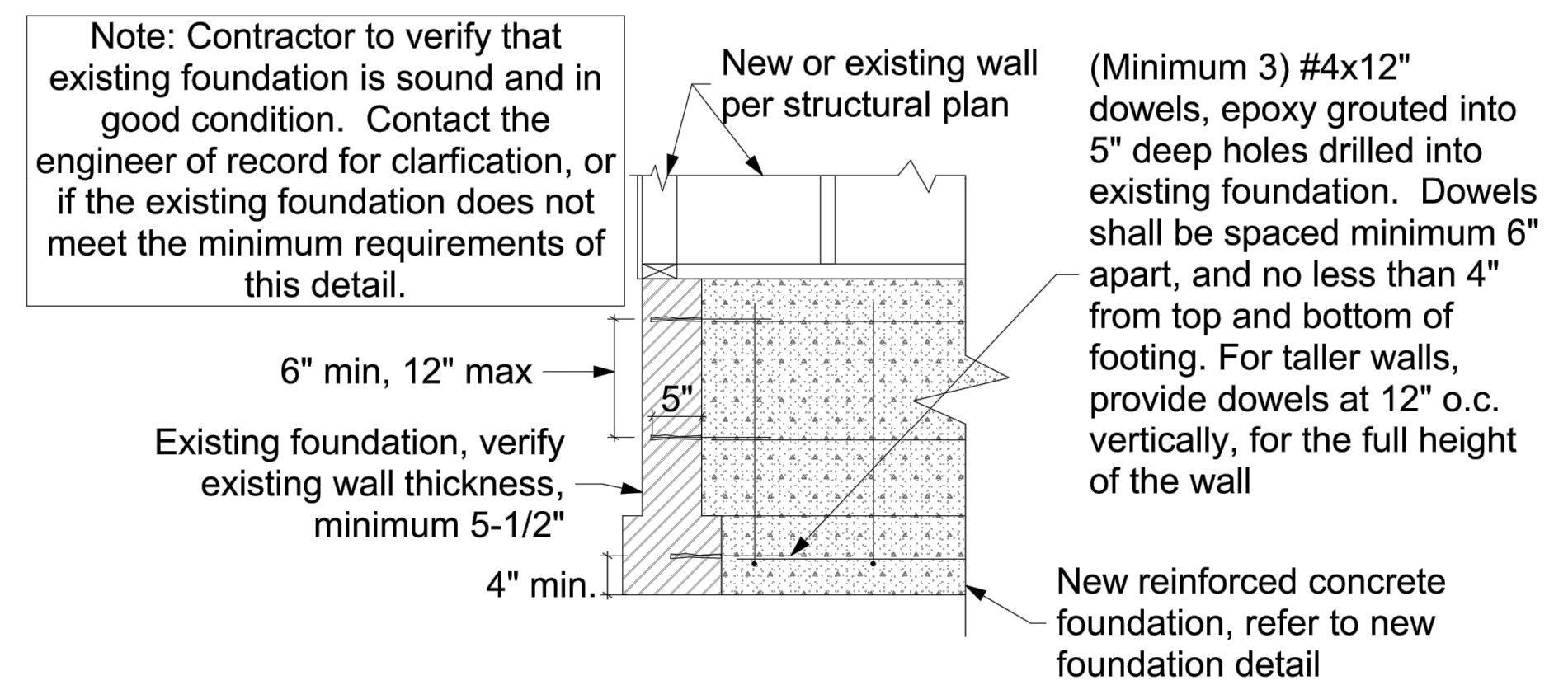
R1 Existing to New Roof Transition Detail  
 Scale: 3/4"=1'-0"



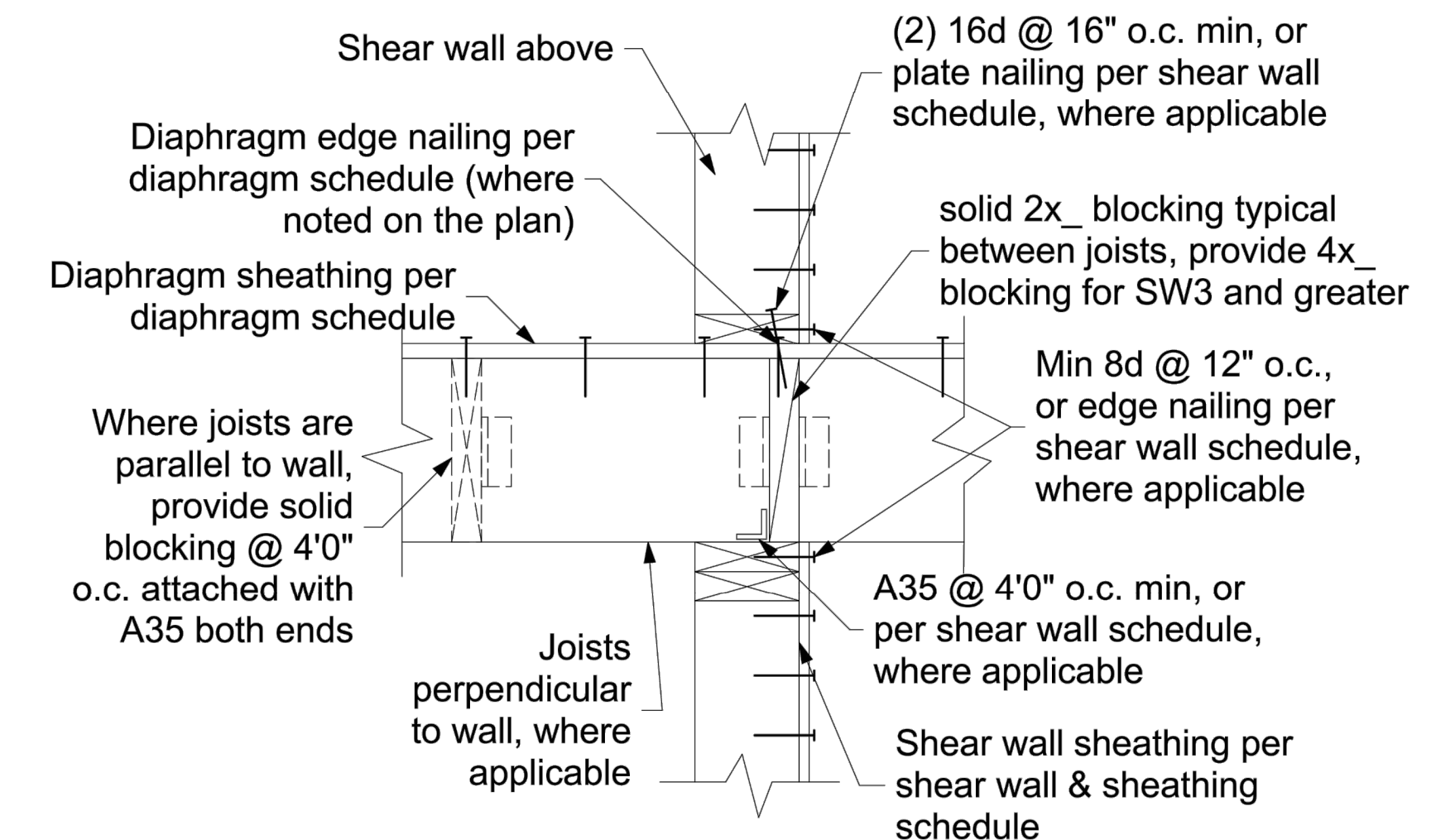
SW Roof Level Shear Wall Section  
 Scale: 3/4"=1'-0"



Exterior Shear Wall Framing Typical Detail  
 Scale: 1"=1'-0"



NF New Foundation Connection to Existing Foundation Detail  
 Scale: 3/4"=1'-0"



Interior Shear Wall Typical Detail  
 Scale: 1-1/2"=1'-0"

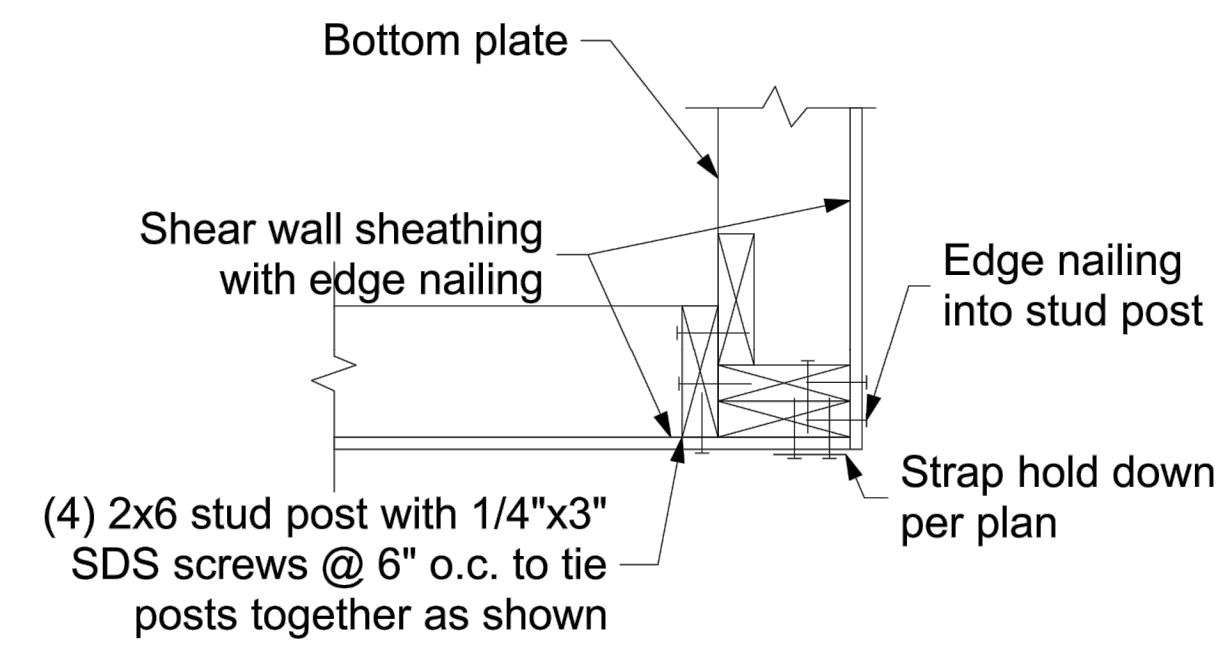
Graham Addition  
 4220 91st Ave SE  
 Mercer Island, WA 98040

Revisions:

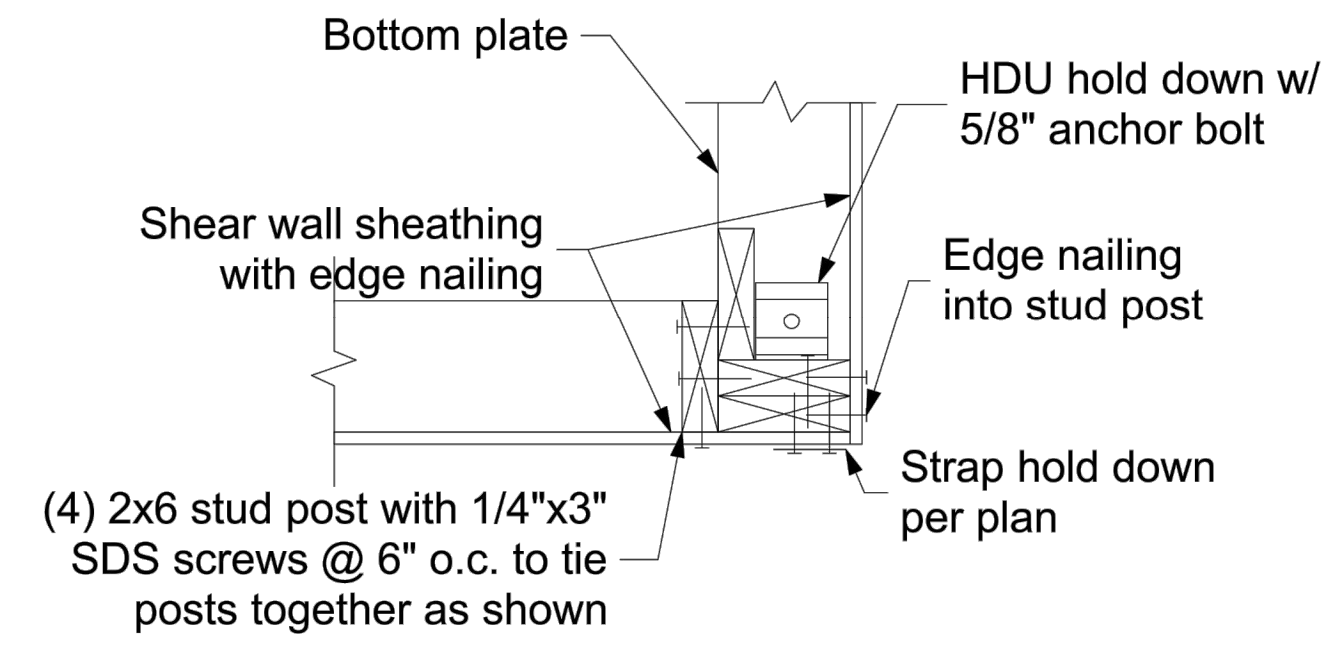
Date:  
 9/17/21

Sheet:

S-2



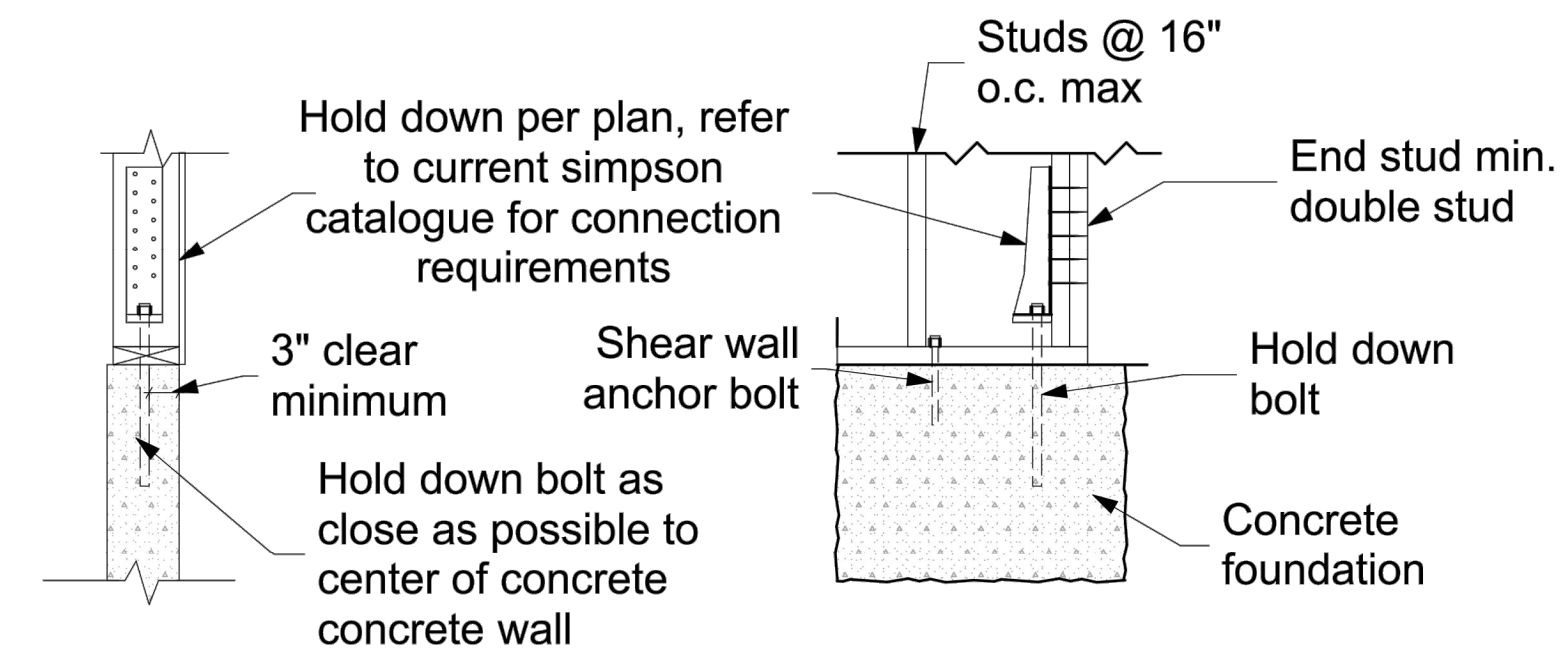
Strap Hold Down Configuration



HDU Configuration

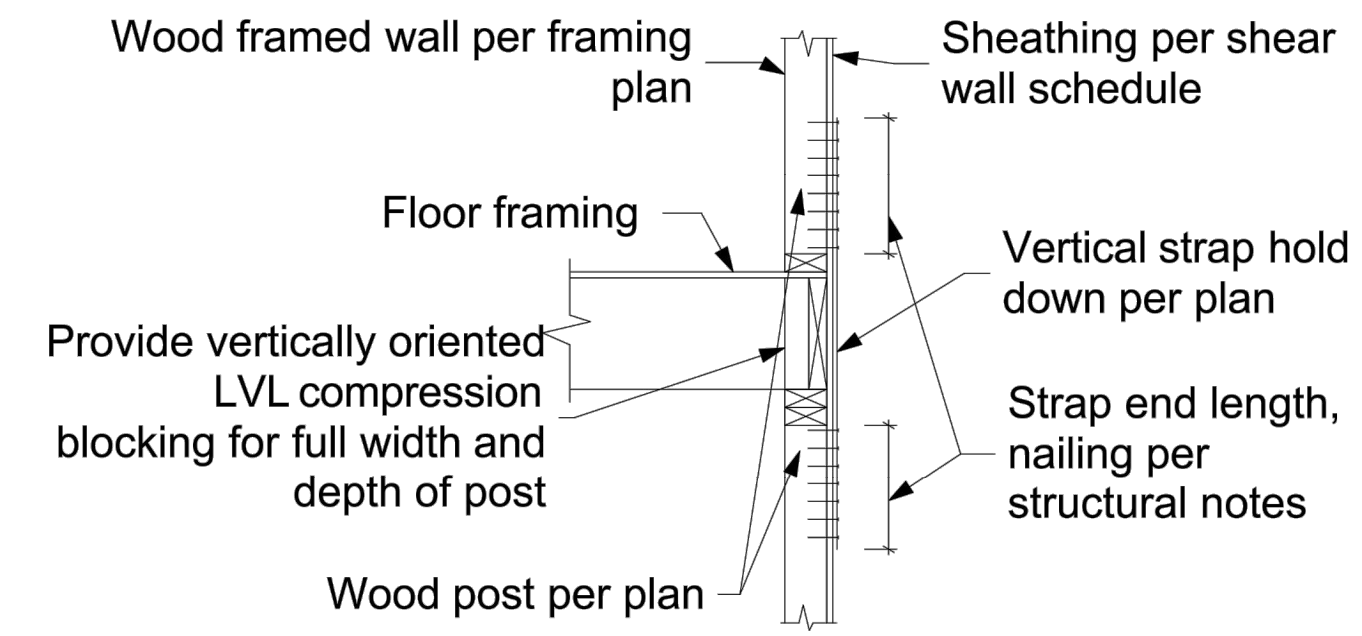
Corner Hold Down Typical Detail

Scale: 1-1/2"=1'-0"



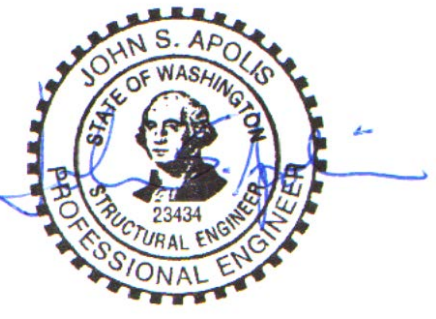
Retrofit HDU Hold Down Typical Detail

Scale: 3/4"=1'-0"



Strap Hold Down Typical Detail

Scale: 3/4"=1'-0"



Consulting Structural Engineering Services  
 6311 17th Ave NE, Seattle, WA 98115  
 Phone: 206-527-1288  
 Email: john@cses-engineering.com

**Graham Addition**  
 4220 91st Ave SE  
 Mercer Island, WA 98040

Revisions:

Date:  
 9/17/21

Sheet:

**S-3**

